



C14RS

STRAIGHT LINE RIPSAW



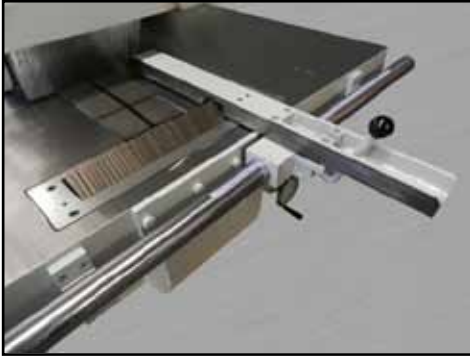
Authorized Dealer:

Global Sales Group, LLC
P.O. Box 1835 * Chico, CA 95927
Toll Free: 877-474-5521
Office: 530-893-2444
www.globalsalesgroupllc.com



C14RS

STRAIGHT LINE RIPSAW



HEAVY DUTY RIP FENCE

Quick setting rip fence runs on round cylindrical guide. Fence is notched to pass over and under the table and top kickback fingers for faster change over.



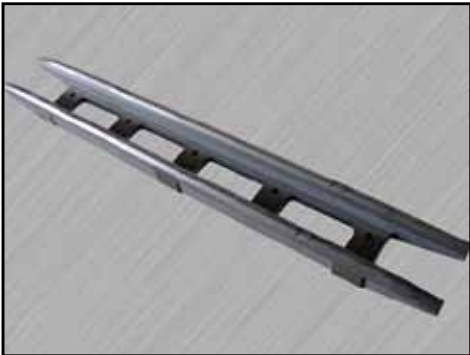
HEAVY-DUTY HOLD DOWN ASSEMBLY

8 hold down rollers over six rows ensure work piece is held firmly to the chain track during cutting operations. Proper hold down ensures glue line accuracy.



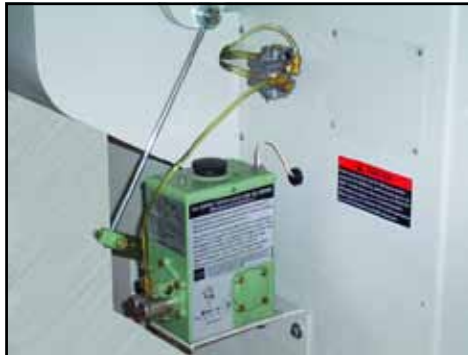
ANTI KICKBACK FINGERS

Top and bottom anti-kickback fingers for safe operation.



HARDENED TRACKS

Specially heat treated & hardened track assembly provides up to 3 times the life



MECHANICAL CHAIN LUBRICATION

Lubricant flow rate can be adjusted automatically with the caterpillar chain feed speed variation. When lubrication runs out the chain stops automatically preventing damage to the machine.



LASER LINE (OPTIONAL)

Provides for quick and convenient positioning of cut which also reduces material waste

FEATURES

- Absolute straight line feeding with glue joint capacity up to 15'
- Rigid machine body consists of a thick welded steel frame with an integral table which is fitted with a sturdy cast column
- Precision caterpillar chain and double "V" guide rails are made of specially heat treated cast iron with up to 3-times the life of a non treated assembly.
- 8 hold-down rolls for increased control and precise straight line cutting (6 rows)
- Precision Built Saw Arbor constructed of nickel chrome steel, large diameter, accurately ground and dynamically balanced
- Arbor runs in precision angular contact type ball bearings (Eliminates any radial run-out & axial thrust)
- Mechanical operation chain oiler provides consistent lubrication to the chain track & automatically adjusts to your feed speed.
- Built in safety shut off when oil level gets too low.
- (4) sets of anti-kickback fingers. 3 top and 1 set in the table
- Soft start - Star Delta starter and Telemecanique CSA / U/L magnetic starters

SPECIFICATIONS

Saw arbor diameter	1.5"
Saw blade diameter	12"-15"
Saw arbor speed	3500 RPM
Feed speeds variable	49 to 118 FPM
Max. workpiece thickness	4.92"
Min. workpiece length	8"
Distance between saw and column	24"
Arbor motor	20 HP
Feed motor	2 HP
Table size	50" x 75"
Electrics	230 volt / 3 phase
Net weight	3410 lbs
Machine dimensions	89" x 56" x 57"
Shipping weight	3960 lbs
Shipping dimensions	83" x 63" x 67"